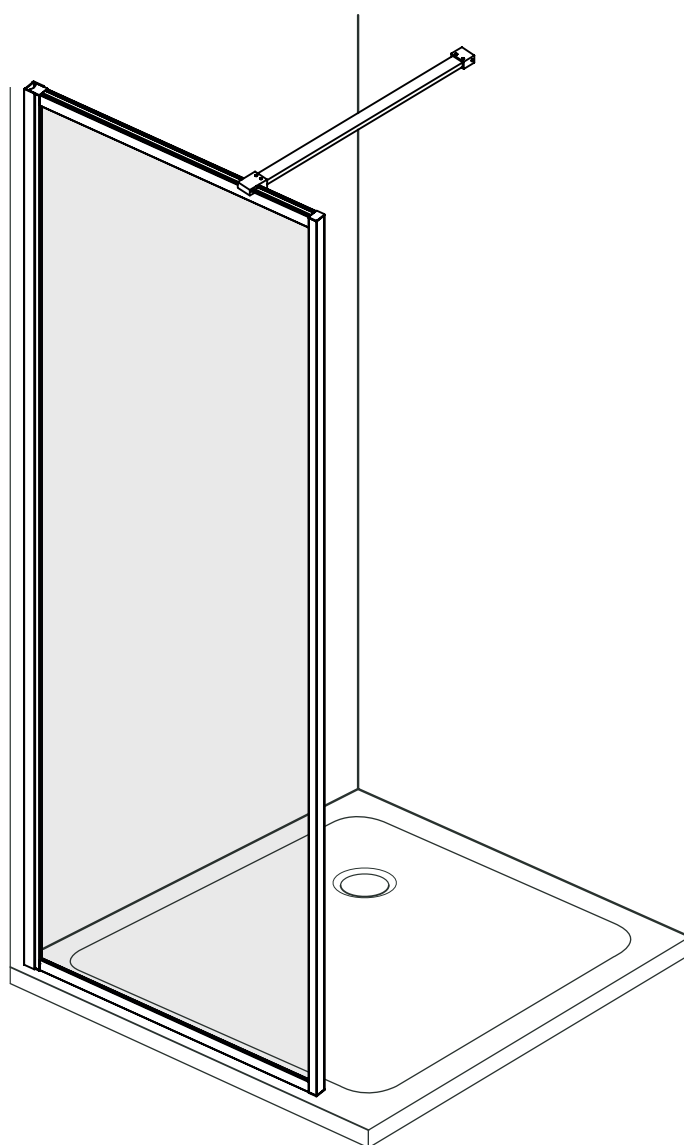


# DRENCH

## FITTING INSTRUCTIONS

### Fixed Panel



# Maintenance and cleaning

## Profiles & Aluminium Frames

The best type of product is a **mild detergent solution with warm water**. A sponge or soft cloth should be used and nothing should be harsher than natural bristle brushes.

## Glass

There is an **Easy clean coating** to the internal face of the glass only. Please be advised that on occasions there may be mist to this face. This can be easily removed with dry lint free cloth. For daily cleaning we recommend to use **a conventional glass cleaner and a squeegee, especially for the internal side.**



**We recommend regularly wiping your product with a lint free soft cloth**



**You may like to use a squeegee to remove water splash**



**Should you wish to use a bathroom cleaner, it should be a mild detergent only and ensure it is rinsed thoroughly with clean water.**



**Never use any solvents, abrasive cleaners or cloths or anything containing bleach.**

- Do **NOT** use abrasive cleaners or bleach to clean this product. This could adversely effect the profile finish.
- Do **NOT** use solvents or equivalent chemicals to clean this product.
- This product **MUST** be cleaned with mild detergent. Applied and then wiped off with a soft lint-free cloth.

# PRE-INSTALLATION CHECKS

Please read these pre-installation instructions before commencing installation. Please retain these instructions

## PRE-CHECKLIST

- Check the labels on the box/tube and cross reference the codes to make sure you have the correct items.
- Check the **Components list & Box Contents** sections to make sure you have all required items.
- Please check the contents of the box/tube for defects or damage. Once installation commences, Drench Europe Ltd cannot accept any claims for defect or damage.
- Report any defects to Drench Europe Ltd. (email: sales@drenchshowers.co.uk, please send images of defects).
- Make sure the walls you are fixing to are plumb.

## WARNING & ESSENTIAL ADVICE

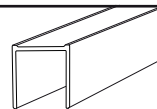
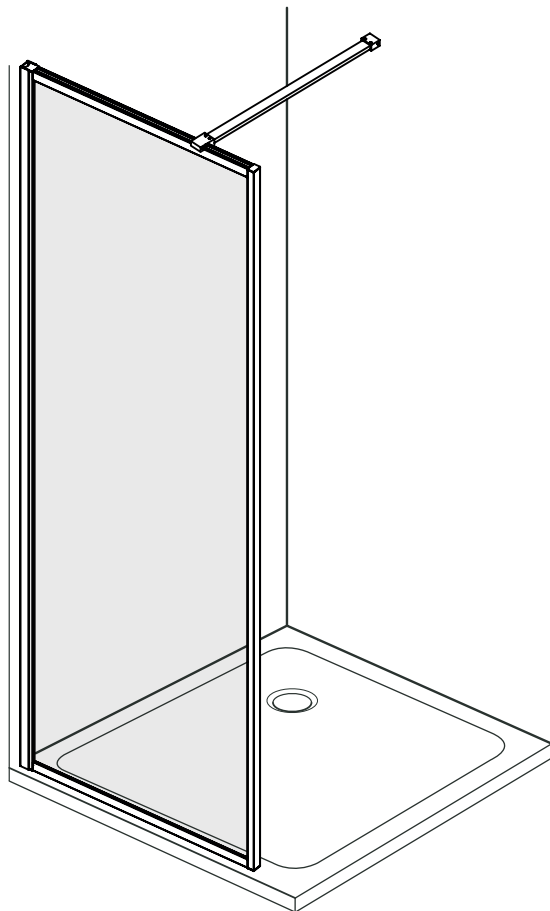
- **Before drilling:** Check for hidden pipes or cables that may be located behind the wall you are fixing the panel/support bars to.
- It is recommended 2 people carry out installation of these panels.
- The glass supplied is toughened safety glass **EN12150**. However, please be aware the kite mark is at no set position on the glass.
- An Easyclean coating is on the internal face of the glass only. Please be advised that on occasions there may be a mist on this face. This can be easily removed with a dry, lint-free cloth.
- Pictures in these instructions are used for illustration purposes only. Continued development of this product may lead to changes in the components illustrated.
- Silicone sealant must be left for 24 hours prior to using the product: In conjunction with the sealant manufacturer's guidelines.
- It is recommended that our shower screens are fitted to a tiled surface or equivalent.
- It is recommended that grouting of tiles should take place prior to installation as cement based grout could potentially damage the profiles surface.

# Product Contents

## I N S T A L L A T I O N

Check box/tube contents for defect/damage **BEFORE** installation. DRENCH cannot accept claims after installation commences.

Diagram 0



**BS1**  
WALL CHANNEL



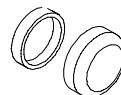
**A**  
WALL SCREWS  
50 mm X 3



**B**  
WALL PLUGS  
X 3



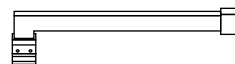
**C**  
9 mm SCREWS  
X 3



**D&E**  
CAPS & BASE  
X 3



**G**  
3 mm DRILL BIT  
X 1



**Support Bar**  
**FXSBNGL**  
Page 7



**Support Bar**  
**FXSBCRS**  
Page 8



**Support Bar**  
**FXSBCLN**  
Page 9

## TOOLS & EQUIPMENT FOR INSTALLATION

Electric drill  
Spirit level or laser level  
6mm Masonry/tile drill bit  
Pencil  
Silicone gun  
Silicone  
Phillips screwdriver  
Allen key set

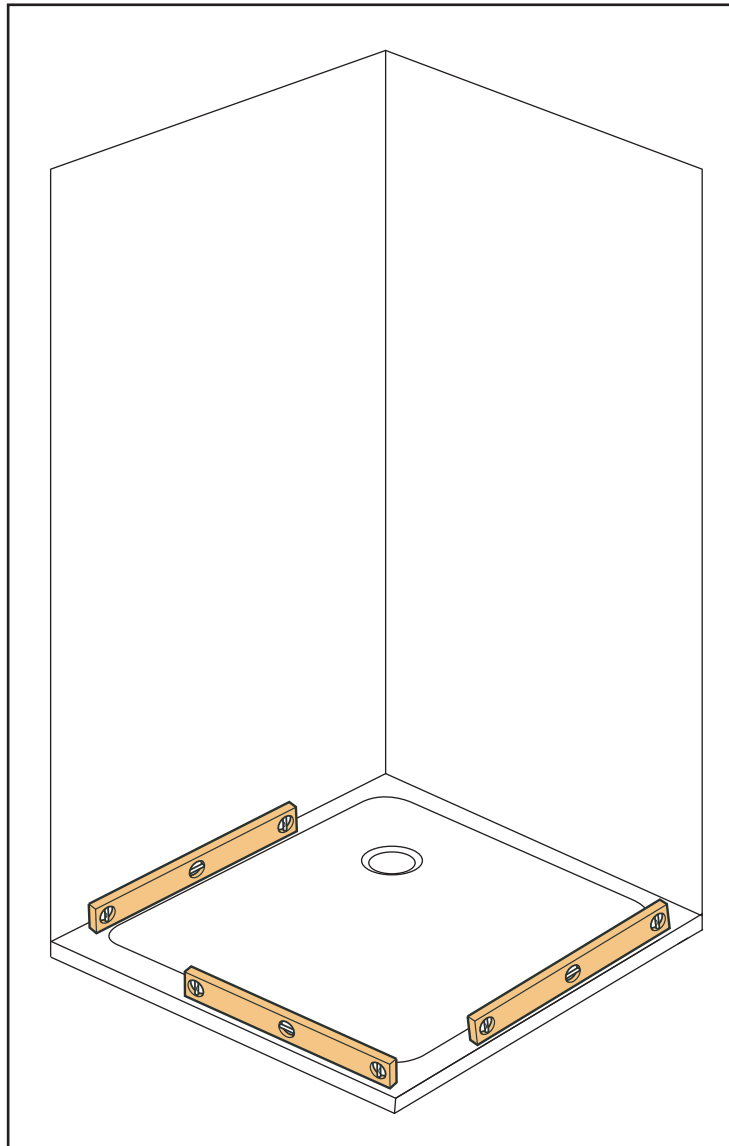
PLEASE NOTE – THIS SHOWER SCREEN IS HANDED.  
IDENTIFY THE HANDING OF THE SHOWER DOOR  
BEFORE STARTING THE INSTALLATION.

# P R E P E R A T I O N

Please read these preparation steps before commencing installation. Please retain these instructions

## PRE-CHECKLIST

- Check the labels on the box and cross reference the codes to make sure you have the correct items.
- Please check the contents of the box for defects or damage. Once installation commences, Drench Europe Ltd cannot except any claims for defect or damage.
- Report any defects to Drench Europe Ltd. (email: [sales@drenchshowers.co.uk](mailto:sales@drenchshowers.co.uk), please send images of defects).
- Make sure the walls you are fixing to are plumb.



**[1]** Ensure the shower tray is completely level on both sides, using a spirit level

**[2]** Make sure the shower tray is fully sealed and leak free before installation of the enclosure.

# Fixed Panel I N S T A L L A T I O N

Check box contents for defect/damage **BEFORE** installation. DRENCH cannot except claims after installation commences.  
**BEFORE** any drilling for the wall profile takes place: Please make sure there are no **Power lines**/**Water pipes** where the wall channel will be installed.

## INSTALLING THE WALL CHANNELS

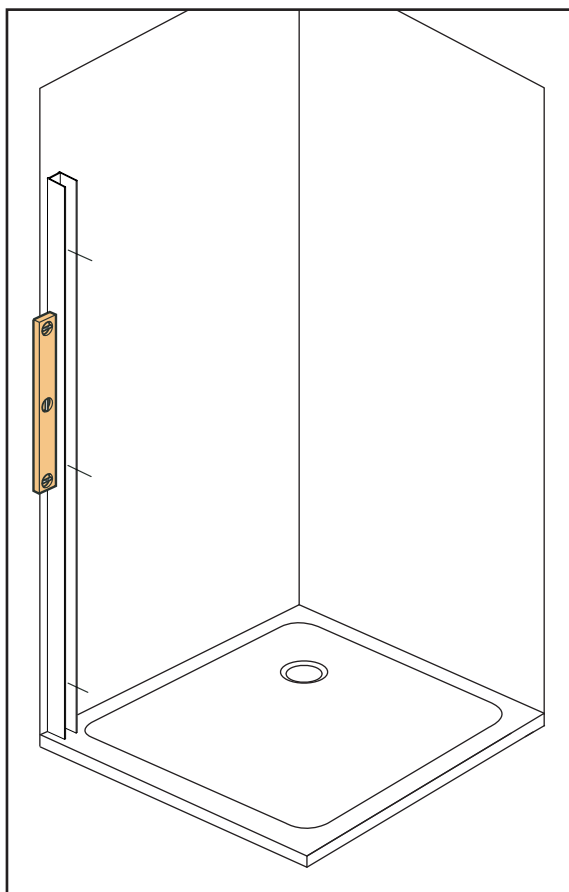


Diagram 1

- [1] Place the wall channels as shown in **Diagram 1**.  
This should be 10mm in from the edge of the shower tray.
- [2] Make sure the wall profile is vertical using a spirit or laser level.
- [3] Using a pencil, mark in the position of the pre-drilled holes in the wall channel. - **Diagram 1a**.
- [4] Using a 6mm masonry/tile drill bit: Drill the marked points from step [3]. - **Diagram 1b**.

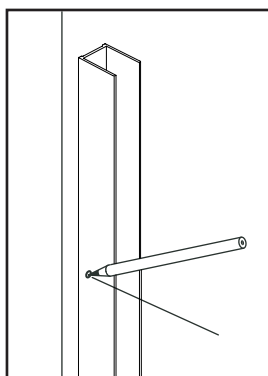


Diagram 1a

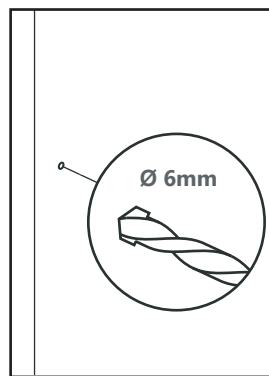


Diagram 1b

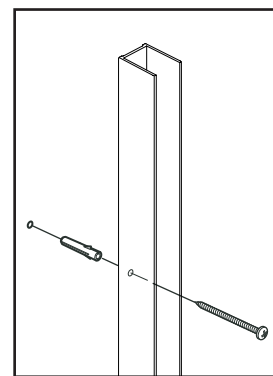


Diagram 1c

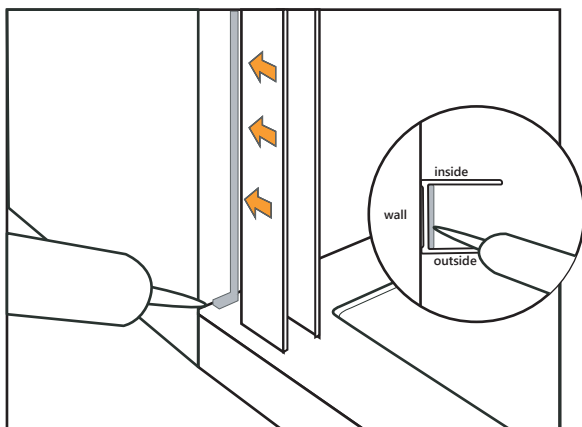
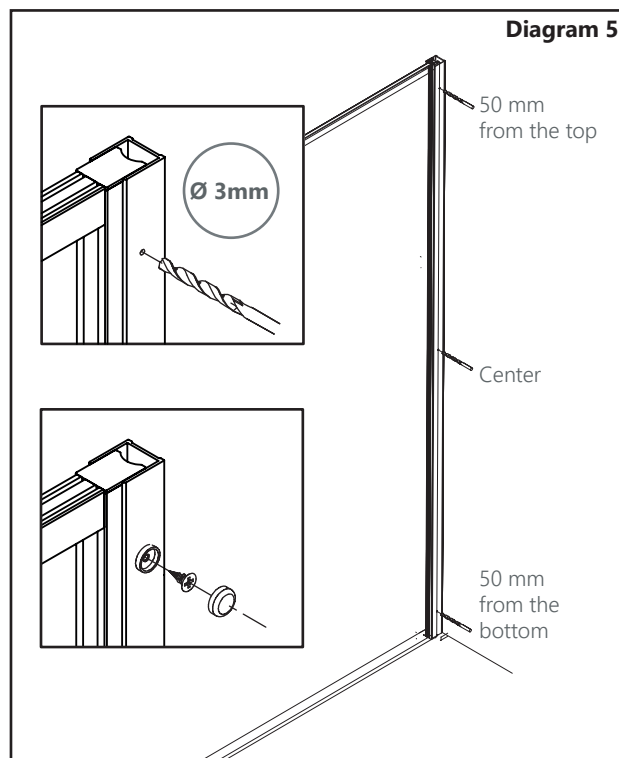
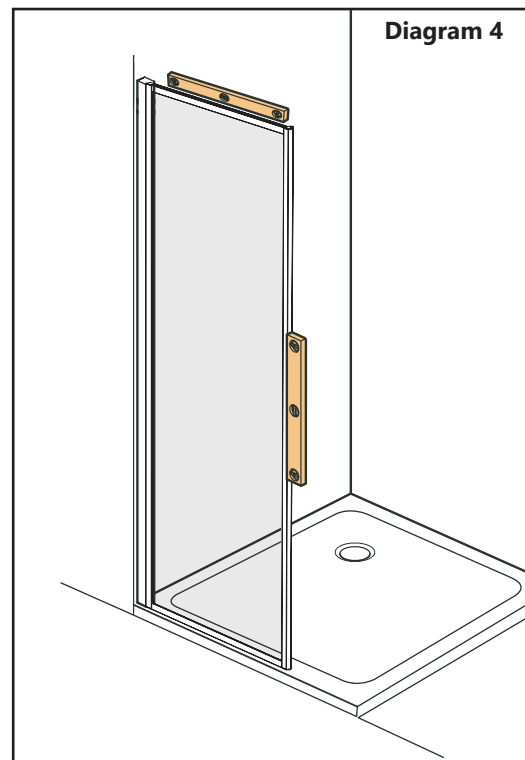
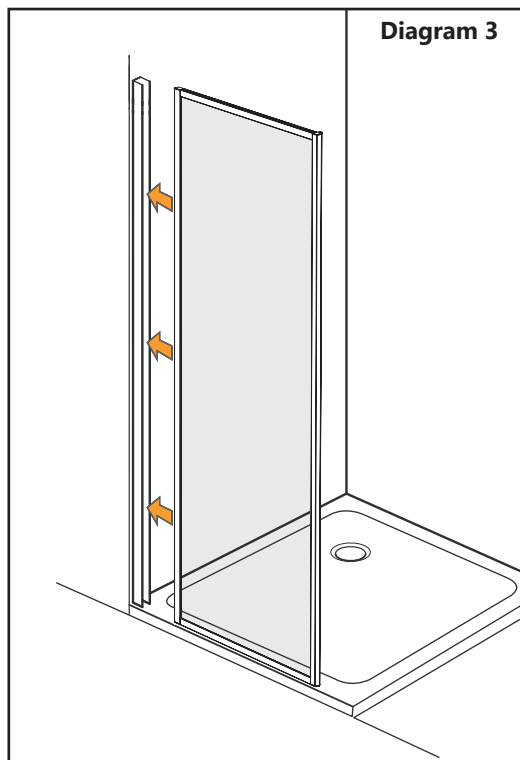


Diagram 2

- [5] Insert the wall plugs as show in **Diagram 1c**.
- [6] Make sure the area is dust free and apply a thin bead of silicone as shown in **Diagram 2**.
- [7] Using 3 x screws, fix the wall channel to the wall.
- [8] Check the wall channel has been installed vertically and the bubble on the spirit level falls between the 2 lines.

# INSTALLING THE PANEL



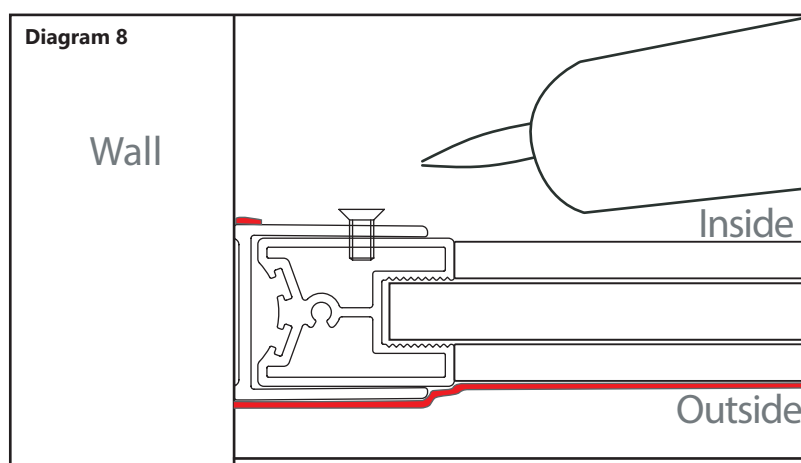
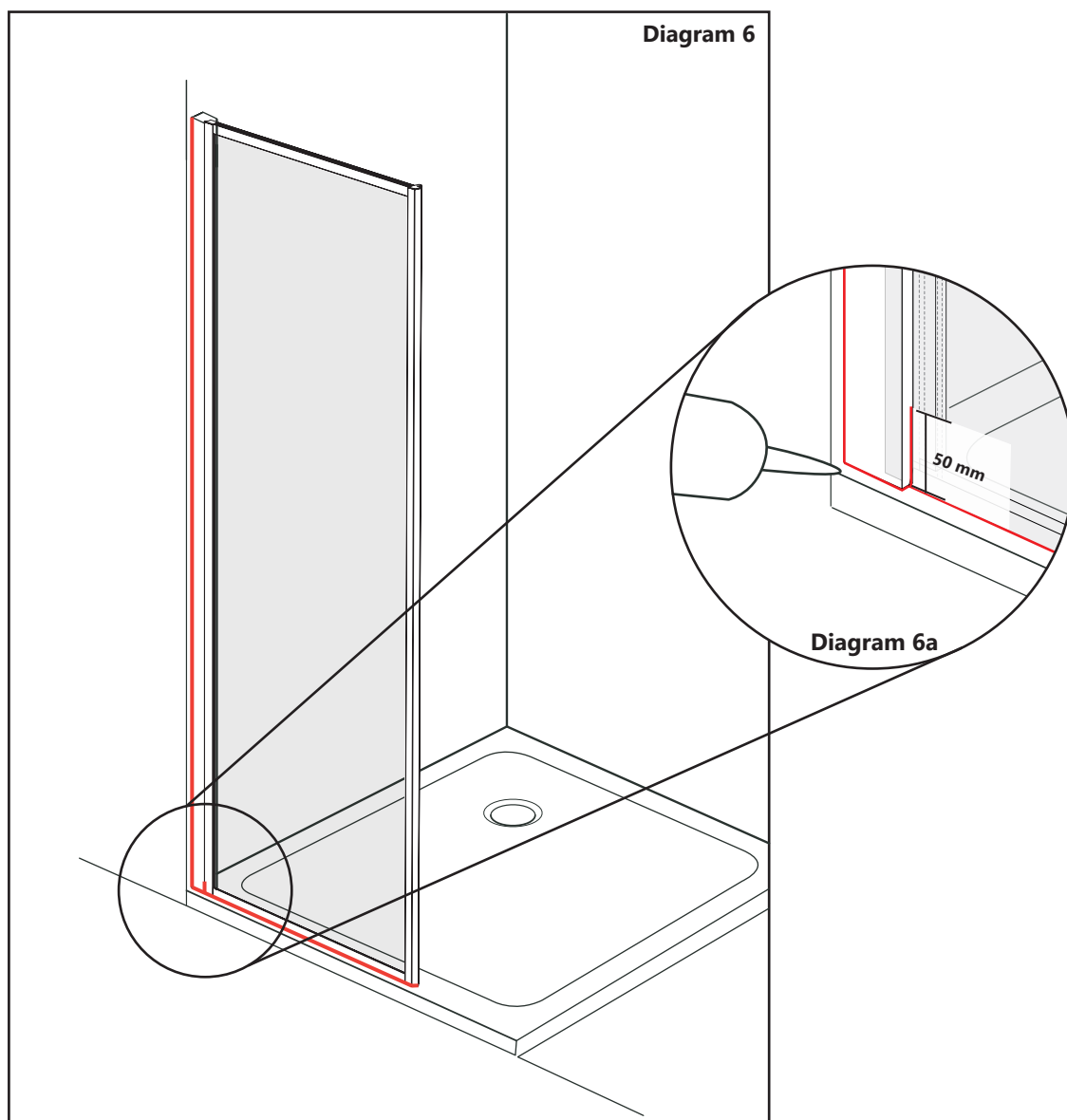
Install the fixed panel into the wall channel as shown in **Diagram 3**.

Using packers, pack up if needed (Packers not provided). Make sure this fixed panel is level across all axis **Diagram 4**.

Using the 3mm drill bit, drill 3 x holes through the inside of both profiles as shown in **Diagram 5**. Holes should be 50mm from the top and bottom and one in the centre.

Attach the 3 x cap bases to the 3 x 9mm screws and fix them into 3 x holes.

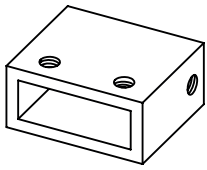
# SEALING THE FIXED PANEL



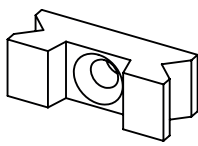
Apply silicone as shown in **Diagrams 6, 6a & 7.**

# INSTALLING FIXED PANEL CORNER SUPPORT BAR

SB2 x 1



SB3 x 1



SB4 x 1

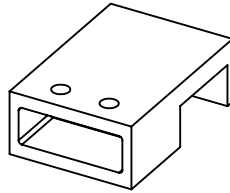
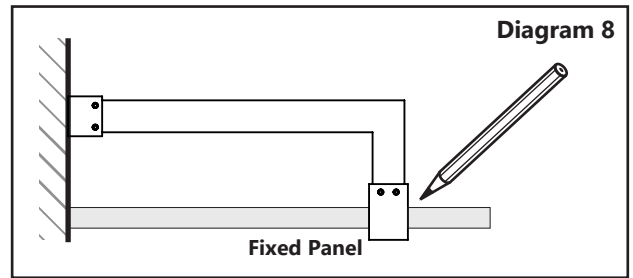


Diagram 8



PLEASE CHECK YOU HAVE ALL PARTS BEFORE STARTING.

Place SB2 and SB4 onto the Support Bar and line up each end against the wall and top profile. Use a pencil to mark out the position against top profile as shown in **Diagram 8**.

Keeping the same position, draw the outline of SB2 on the wall as shown in **Diagram 9**. Using the marked position on the wall, find the centre and drill a hole of 6 mm and screw SB3 into the wall.

Diagram 9

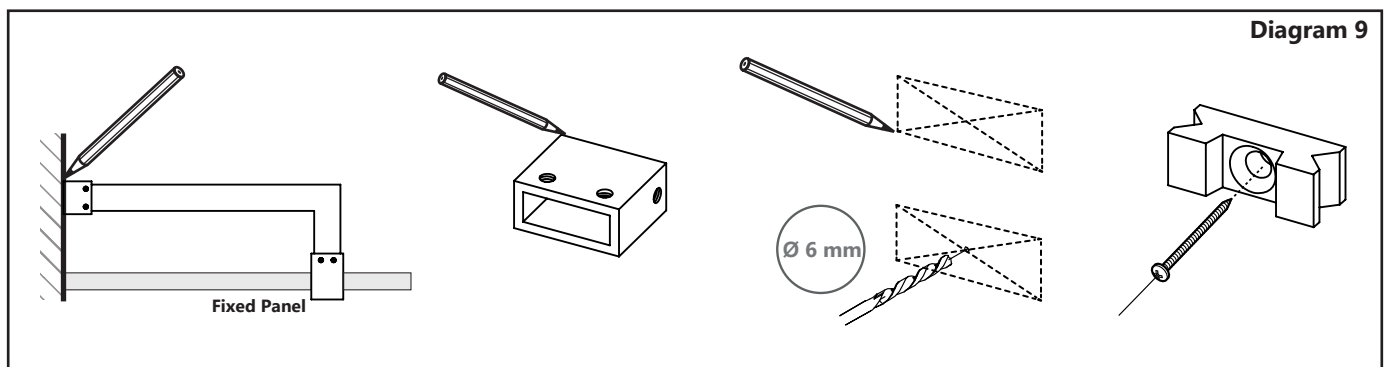


Diagram 10

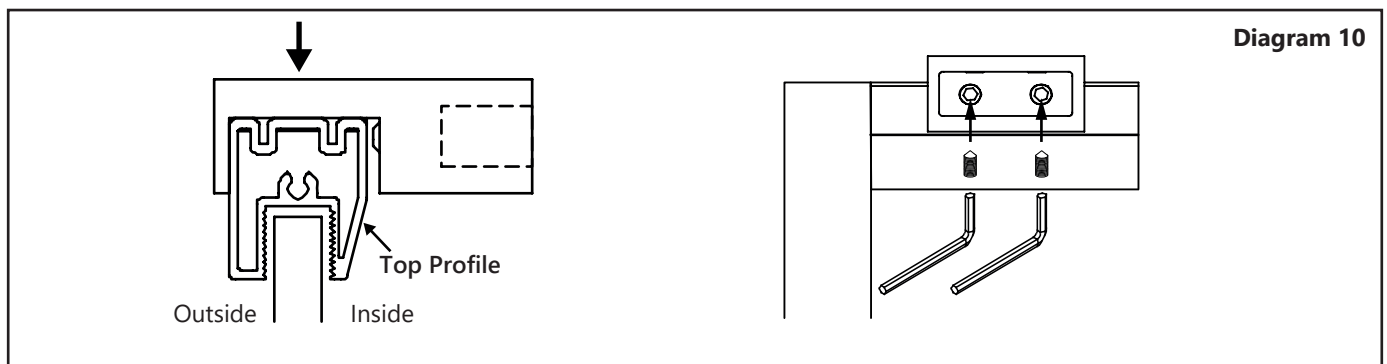
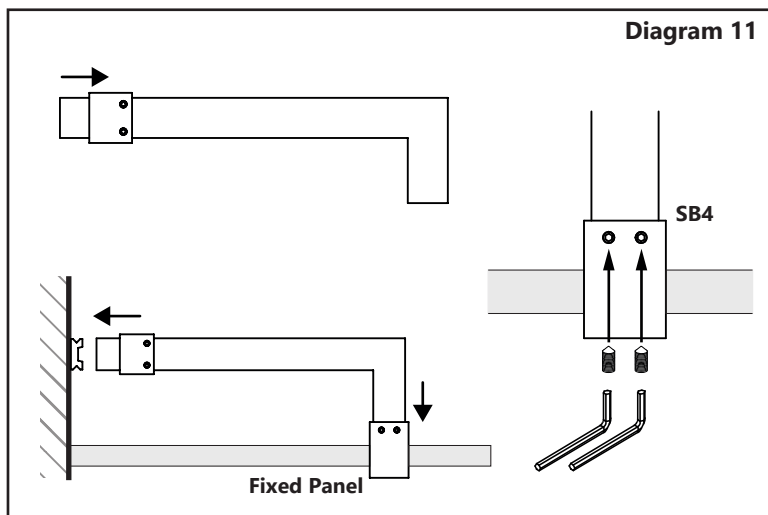


Diagram 11



Place SB4 back onto the top profile and align to the placement marked from **Diagram 8**. Tighten the two grub screws so SB4 doesn't slide along the top profile as shown in **Diagram 10**.

Slide SB2 up the Support Bar and line the bar up to SB3 and SB4. Place the bar in SB4 and use the allen key to tighten. Slide SB2 back over SB3 and use the allen key to tighten the grub screws to hold the support bar in place as shown in **Diagram 11**.

# INSTALLING FIXED PANEL ACROSS SUPPORT BAR

SB2 x 1

SB3 x 1

SB4 x 1

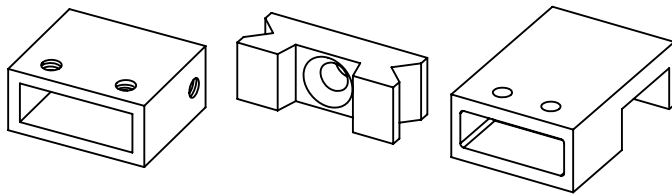
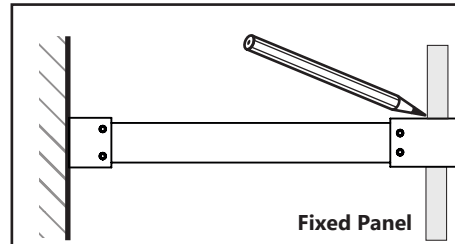


Diagram 12



PLEASE CHECK YOU HAVE ALL PARTS BEFORE STARTING.

Place SB2 and SB4 onto the Support Bar and line up each end against the wall and top profile. Use a pencil to mark out the position against top profile as shown in **Diagram 12**.

Keeping the same position, draw the outline of SB2 on the wall as shown in **Diagram 13**. Using the marked position on the wall, find the centre and drill a hole of 6 mm and screw SB3 into the wall.

Diagram 13

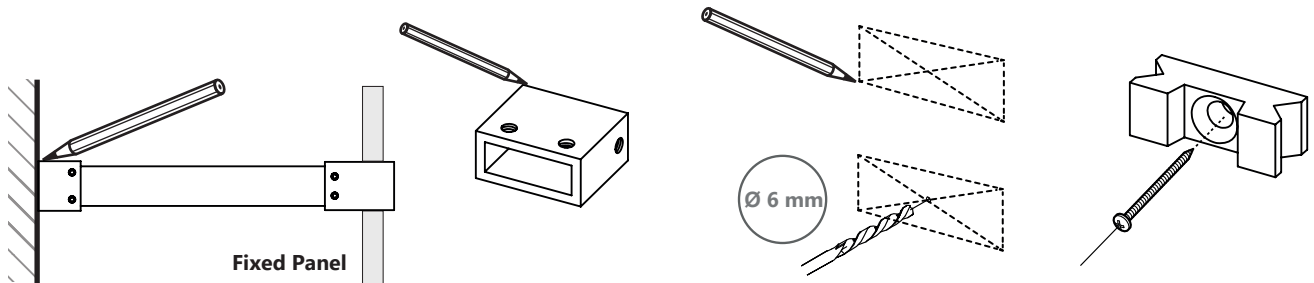


Diagram 14

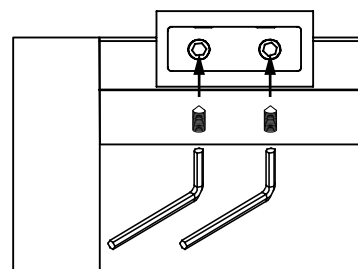
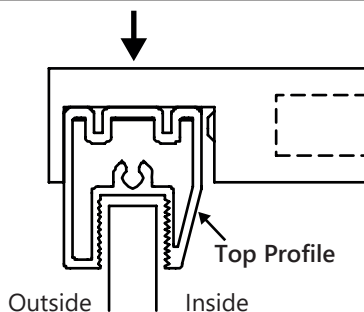
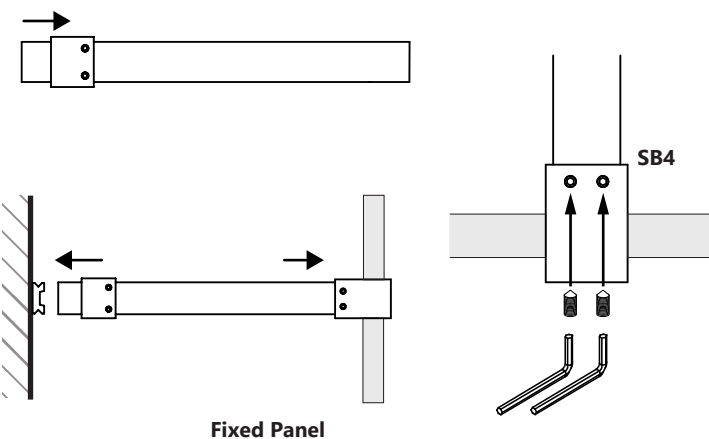


Diagram 15

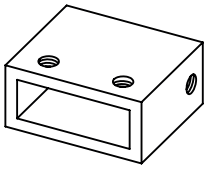


Place SB4 back onto the top profile and align to the placement marked from **Diagram 12**. Tighten the two grub screws so SB4 doesn't slide along the top profile as shown in **Diagram 14**.

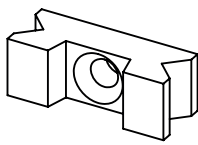
Slide SB2 up the Support Bar and line the bar up to SB3 and SB4. Place the bar in SB4 and use the allen key to tighten. Slide SB2 back over SB3 and use the allen key to tighten the grub screws to hold the support bar in place as shown in **Diagram 15**.

# INSTALLING FIXED PANEL CEILING SUPPORT BAR

SB2 x 1



SB3 x 1



SB11 x 1

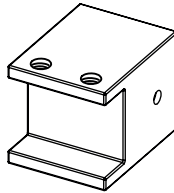
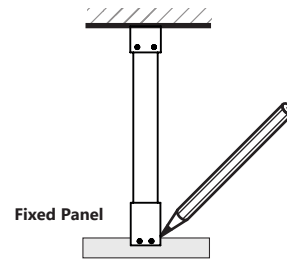


Diagram 16



PLEASE CHECK YOU HAVE ALL PARTS BEFORE STARTING.

Place SB2 and SB11 onto the Support Bar and line up each end against the ceiling and top profile. Use a pencil to mark out the position against top profile as shown in **Diagram 16**.

Keeping the same position, draw the outline of SB2 on the wall as shown in **Diagram 17**. Using the marked position on the wall, find the centre and drill a hole of 6 mm and screw SB3 into the ceiling.

Diagram 17

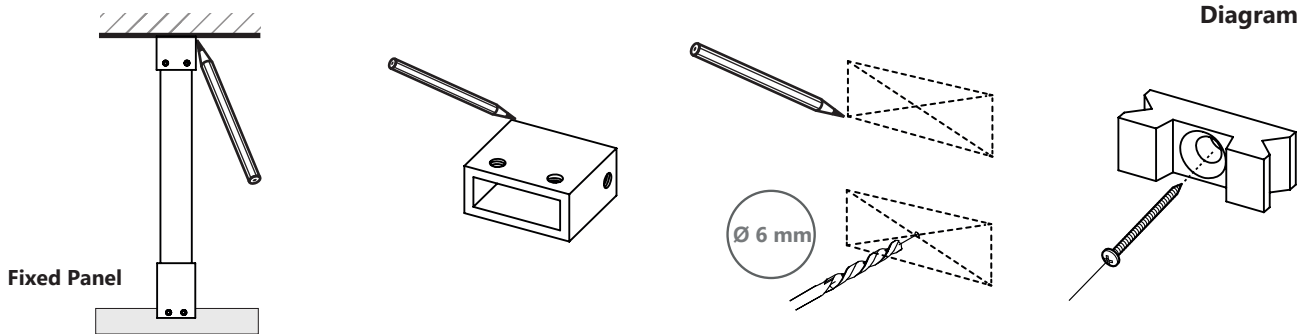
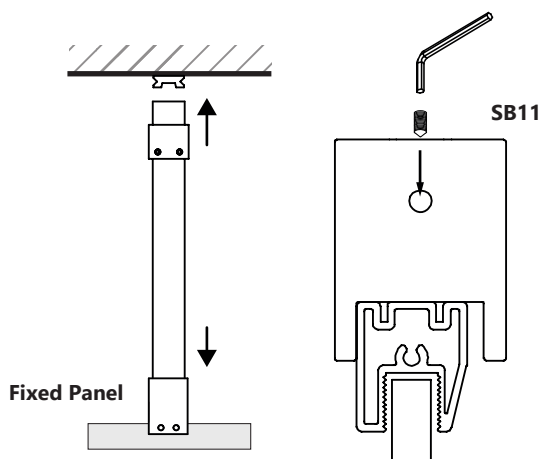


Diagram 18



Diagram 19



Place SB11 back onto the top profile and align to the placement marked from **Diagram 16**. Tighten the two grub screws so SB11 doesn't slide along the top profile as shown in **Diagram 18**.

Slide SB2 up the Support Bar and line the bar up to SB3 and SB11. Place the bar in SB4 and use the allen key to tighten. Slide SB2 back over SB3 and use the allen key to tighten the grub screws to hold the support bar in place as shown in **Diagram 19**.